

DUNGEON MAGIC

SWORD OF THE ELEMENTS



NES-DM-USA ★
**HOW
TO
PLAY**

EmuMovies

TAITO™
THE ONLY GAME IN TOWN.™

Printed in Japan.

TAITO™

TAITO™



This official seal is your assurance that Nintendo® has reviewed this product and that it has met our standards for excellence in workmanship, reliability and entertainment value. Always look for this seal when buying games and accessories to ensure complete compatibility with your Nintendo Entertainment System®.

Nintendo
ENTERTAINMENT
SYSTEM®

Nintendo® and Nintendo Entertainment System® are registered trademarks of Nintendo of America Inc.

CARE OF YOUR GAME

- Always make sure the power is off when inserting or removing the game pak from your computer.
- This is a high precision game pak. Avoid subjecting it to extreme temperatures or shocks. Store at room temperature. Never attempt to dismantle it.
- Do not touch the terminal connectors or get them wet or the circuitry may be damaged. Never insert your fingers or any metal objects into the terminal leads.
- Use of thinners, solvents, benzene, alcohol and other cleaning agents can damage the game pak.

Nintendo recommends against using a rear projection television with your NES as image retention on the screen may occur.

Taito® and Dungeon Magic™ are trademarks of Taito America Corp. Taito © 1989, 1990.
All Rights Reserved.

THANK YOU

*for buying Dungeon Magic™: Sword of the Elements from Taito®.
Before you begin your adventure please read this
instruction manual carefully.*

The Story	2
How to Operate	3
How to Play	6
The Adventurer's Backpack	10
Merchants	15
The Parry	19
Guide for New Adventurers	20
Casting Magic Spells.....	22
Saving Your Adventure	26
Town of Granville Map	27
Grades Castle Map	28
Sanctuary at Selle Map	29

THE STORY

*"When the shadowed veil returns to mask the midday sun
The Fire of Serpents will rise again; Five shall become the One.
The elements now heed his call, and hope is born alive;
We will have our peace once more when One becomes the Five."*

Once upon a time there was a great warrior. This warrior, MAGI, owned the most extraordinary suit of armor and six of the most beautiful swords the world has ever known.

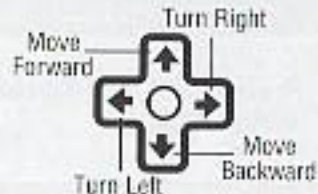
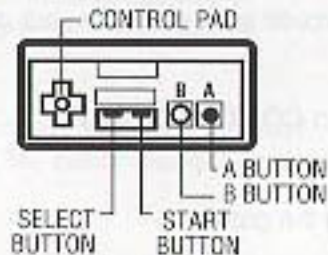
The armor was impervious to all but the strongest magic. The swords were forged of ore that came from deep within the earth and five of them had been enchanted with the powers of the Elements. The last sword is a mystical blade, cast of a powerful, unknown metal. It is the greatest sword of all. It is TORES! For over 500 years, since the end of the Great War, the power of this great armor and those swords have kept peace throughout the land.

Darces the Dark, an evil Overlord, led the evil uprising that became the Great War. Magi defeated him and Darces was exiled to a land far away. But evil does not rest! Those forces have been marshalled over these long years by the dreaded Darces the Dark. Magi was fatally wounded in the battle. While the great warrior no longer lives, his swords and armor do!

It is your quest to find the five Elemental Swords of MAGI, secure TORES, defeat Darces and return peace to the land.

HOW TO OPERATE

Controller



Once you have the compass, you can choose the direction you want to travel by pressing the **LEFT** or **RIGHT** keypad.

HOW TO OPERATE (continued)

BEGIN A NEW ADVENTURE

Press the **START** button to **BEGIN A NEW ADVENTURE**.

CONTINUE YOUR ADVENTURE

This option appears on the title screen after you save your game for the first time.

Press the **DOWN** keypad to select **CONTINUE YOUR ADVENTURE**.

Press the **START** button to begin the game.

Note:

Please read "Saving Your Adventure" section for more information.

Pause Function

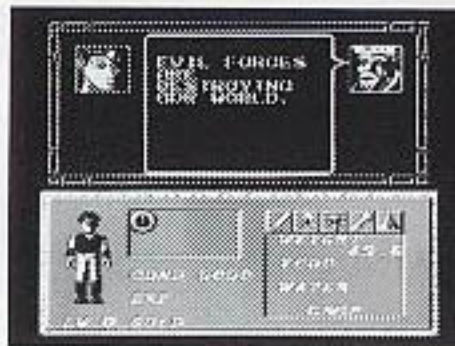
Press the **START** button to pause the game.
Press the **START** button to resume play.

HOW TO OPERATE (continued)

CONVERSATION MODE

Press the "A" button when you want to talk to local villagers or other people you meet outside the towns.

For some conversations, you must press the "A" button more than once.



Some people you meet will ask you questions:

- Press the "A" button to answer **YES**.
- Press the "B" button to answer **NO**.

HOW TO PLAY

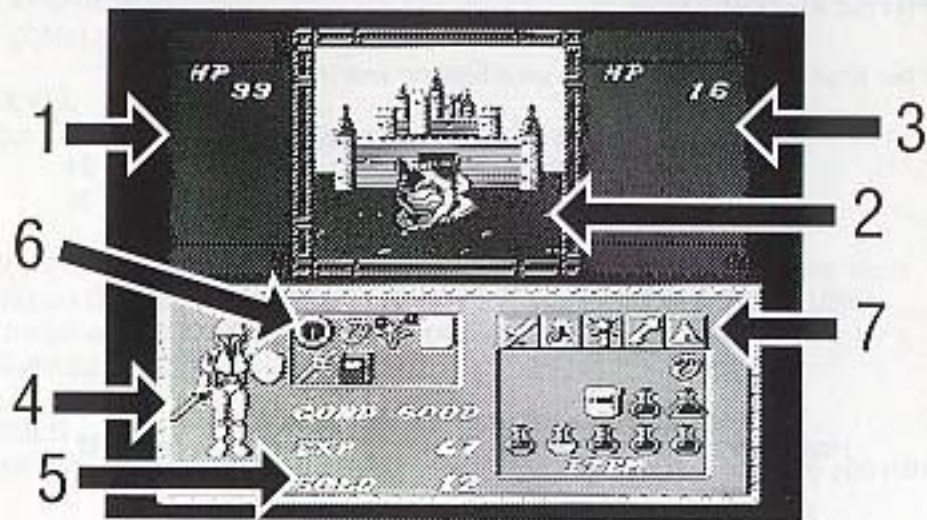
DUNGEON MAGIC is a role playing game. Your role is that of a brave adventurer who must search for the Sword of Tores and use it to defeat Darces the Overlord. Along the way, you develop your fighting skills, become a master of magic, and complete a series of quests before finding Tores and defeating Darces.

A role playing game takes many hours to play. We suggest you keep this manual handy and save your game often. Take the time to write down important information you discover, such as magic spells, and locations of special objects.

PLAYER STATUS - The game screen is divided into these sections:

- | | |
|--------------------------|---|
| 1. Adventurer's Scroll | Shows your current strength (Health Points). |
| 2. Game Window | Provides a forward, 3-D scrolling view. |
| 3. Monster's Scroll | Shows the health points of your enemy. |
| 4. Arms Panel | Displays the armor and weapons you're using. |
| 5. Player Status | Shows your ability, experience, health, and gold. |
| 6. Quest Window | Displays magical items successfully recovered. |
| 7. Adventurer's Backpack | Shows options (5) you can use at any time. |

HOW TO PLAY (continued)



HOW TO PLAY (continued)

PHYSICAL CONDITION

Your physical condition affects your fighting and magic abilities.

CONDITION	EFFECT
GOOD	Perfect health.
HURT	You have suffered an injury.
PARA	Enemy magic paralyzes your body.
POIS	You've been poisoned.
CURS	A curse is on your head.

Healing potions, magic spells, or visiting the inn will cure **HURT**.

Restoring potions, magic spells, or visiting the inn will cure
PARA, POIS, or CURS.

HOW TO PLAY (continued)

EXPERIENCE

Fighting evil creatures increases your experience.

LEVEL

You can increase your ability and strength by increasing your experience.

15 experience points raises you to **Level 1**.

35 experience points raises you to **Level 2**.

The City of Granville is home to five powerful Wizards. An adventurer must choose **ONE** wizard as his teacher when starting a **NEW ADVENTURE**. The wizard will decide if you deserve a promotion! No one knows how far a student can progress!

GOLD

Many monsters and magicians carry gold. Slaying them could make you rich.

THE ADVENTURER'S BACKPACK

The Adventurer's Backpack gives you five different options to use.



Weapons And Armor (Sword)

Bought from local merchants, or found in treasure chests.

Items (Jar)

Bought from local merchants, or found in treasure chests.

Spells (Magic Wand)

Have a variety of uses. Strange symbols are manipulated to create wondrous magic. Only the wizards of Grades know their power!

Use (Key)

Opens doors and treasure chests. Be wary. Some doors have unfriendly surprises behind them!

Camp (Tent)

Sustains your life outside the towns and villages. Stock up at your friendly local merchant!

THE ADVENTURER'S BACKPACK (continued)

TO ENTER THE ADVENTURER'S BACKPACK:

- Press the **START** button to **PAUSE** the game.

TO USE WEAPONS AND ARMOR (SWORD):

- Press the **LEFT** or **RIGHT** keypad until the **sword** symbol is highlighted.
- Press the **SELECT** button to enter the **Weapons & Armor** window.
- A small yellow square will appear over the first item in the window.
- Use the keypad to select other **Weapons and Armor**.
- Press the "**B**" button to activate the item and arm your character.
- Press the **START** button to resume play.
- Press the "**A**" button to fight.

TO USE AN ITEM (JAR):

- Press the **LEFT** or **RIGHT** keypad until the **jar** symbol is highlighted.
- Press the **SELECT** button to enter the **item** window. A small yellow square will appear on the first item in the window.
- Use the keypad to select an **item**.
- Press the "**B**" button to ready the **item**.
- Press the **START** button to resume play.
- Press the "**A**" button to use the **item**. Make sure the **item** window is on the game screen.

TO CAST A MAGIC SPELL (MAGIC WAND):

- Press the **LEFT** or **RIGHT** keypad until the **magic wand** is highlighted.
- Press the **SELECT** button to enter the **spell** window. A small yellow square will appear on the first available symbol in the window.
- Use the keypad to select a symbol.
- Press the "**B**" button to ready the symbol.
- Use the keypad to select other symbols to complete your spell. Press the "**B**" button each time you select a symbol.
- Press the **START** button to resume play.
- Press the "**A**" button to cast the spell. Make sure the **spell** window is on the game screen.

TO OPEN DOORS AND TREASURE CHESTS:

- Press the **LEFT** or **RIGHT** keypad until the **key** is highlighted.
- Press the **"A"** button to open doors and treasure chests.

TO CAMP:

- Press the **LEFT** or **RIGHT** keypad until the **tent** symbol is highlighted.
- Press the **"A"** button to eat and drink.

Every town and village in Grades has two types of merchants.



ARMORERS

Offer quality weapons and defensive elements. The prices they charge are the same throughout the kingdom.

GROCERS

Sell food and drink, healing potions, and magic powders. Some towns offer lower prices. Shopping around is a good idea.

MERCHANTS (continued)

ARMORER



SWORDS



SHIELDS



BOOTS



ARMOR



GAUNTLETS



LEGGINS

MERCHANTS (continued)

GROCER



MAGIC POWDERS



HEALING POTIONS



FOOD & DRINK

MERCHANTS (continued)

TO BUY AND SELL WITH A MERCHANT:

- Press the "A" button to say **YES** when he asks if you want to buy/sell.
- Press the "B" button to say **NO** when he asks if you want to buy/sell.
- Press the "A" button to buy/sell the item. Continue pressing the "A" button if you want to buy/sell more than one item.
- Use the keypad to choose other items you want to buy/sell.
- Press the "B" button to exit the shop.

Merchants are always looking for deals; you can sell your unused items and weapons to them. Don't try haggling for a good price. The motto in Grades is *"take it or leave it"*.

THE PARRY

The Parry

Many monsters are very hard to fight, but there is a way to defeat them! The **parry** is a long practiced art of evasion.

To Use the Parry:

- Turn away from the enemy as soon as you attack. You can turn to the side, or back up several steps. Retreating is very useful when battling a strong enemy on the other side of a door.
- Use the **parry** to eat and drink, use potions, change magic spells, or switch weapons.

GUIDE FOR NEW ADVENTURERS

- The Old Man of Granville has a gift to start you off on your journey.
- The Wizard of **SURA** is master of the Water Magic. This power is good for attack and defense. A spell of nine vertical lines creates a temporary shield which will protect you from many monsters.
- Immediately north of Granville is Castle Grades. The King and Queen have much to tell and gifts to give - so this is a good place to start. Stay within the walls of the castle until you find them.
- Return to Granville - visit the Armorer and trade your short sword for a stronger weapon. Next visit the Inn Keeper to save your progress. Go outside and fight some Cobras to gain experience, but stay close to the city walls.
- Continue your quest by travelling to Deirus, but be sure you stop in the town of Gran to buy food/drink for your travels. Gran is northwest from Castle Grades.

GUIDE FOR NEW ADVENTURERS (continued)

- The flies can be fierce on the road to Deirus. This would be a good time to practice your parry.
- In Deirus, you will hear of Sara Spring, which lies north of the town. Go there and receive the first Elemental Sword. Return to Deirus and save the game.
- North of Sara Spring is the Sanctuary at Selle. Enter the maze and make your way down to the statue of Bildevance. A powerful force will envelop the sword. Return to Granville and let the Wizards examine it. One of them has important news!
- The adventure is just beginning. Good fortune go with you, and don't forget your graph paper!

CASTING MAGIC SPELLS

Each Wizard has mastered a certain type of magic. When you meet a Wizard, he will give you the four basic elements [e.g. ● | — ○] of his mystical studies. Using one or any combination of these four symbols, all of the spells of his magic can be cast. Other Wizards will not give you additional magic symbols unless you present them with one of Magi's five Elemental Swords.

When symbols from one magic are combined with symbols of another magic, new types of spells can be created. There are literally hundreds of spells possible for a master magician who has passed the scrutiny of all the Wizards.

It is important to remember that the source of all magic is the life force of the user. Therefore, each time a spell is cast, some life energy is depleted from your Health Points. Hence, the more powerful the spell, the more Health Points you are likely to lose. Some spells are good to use in combat, while others are informative or replenish vital functions. Still others perform astounding feats.

CASTING MAGIC SPELLS (continued)

Like any good practitioner of the magic arts knows, a bit of practice early on may prove invaluable down the road. Though there is not really a wrong choice, the game will flow more smoothly if you select the appropriate Wizard to teach you.


There are many spells to attack and defend against various kinds of enemies. Legend has it that a certain incantation can actually break open the ocean. It is also said that a certain mixture of Magic Symbols gives you the power of flight.


As every master mage is aware, there may be more than one way to cast a spell. If you are void of a certain symbol, you may be able to use another spell altogether to accomplish your goal.

We suggest you begin your game by visiting the Wizard of SURA, or Water Magic. SURA is mainly a defensive magic and will allow you more time to wander through the outside world, defeat enemies, gain experience, and discover the full breadth of the Island Grades.


CASTING MAGIC SPELLS (continued)


Here are some basic spells to help you get started.

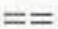
 Opens Dungeon Doors

 Cures Paralysis


 Cures Poison

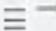
 Protects against Physical Attack

 Protects against Magic Attack


 Map

CASTING MAGIC SPELLS (continued)

 Gives Information on Adventurer

 Gives Information on Enemy

 Cures Blindness

 Restores Health

 Removes Curse

All great sorcerers keep meticulously correct records of their spells, so be sure to maintain an accurate log when you mix untried symbols or cast untried spells.

SAVING YOUR ADVENTURE

DUNGEON MAGIC takes a long time to complete. The game cartridge contains a battery so you can save your game without starting over or entering a password.

To save the current game:

- Visit a local inn. You'll find one in every town and village.
- Press the "A" button to say **YES** when the Inn Keeper asks if you want a room for the night. **Make sure you have two (2) gold pieces!** The game screen will turn grey for two seconds. Your game is saved.
- Press the "A" button if you want to continue playing the game.

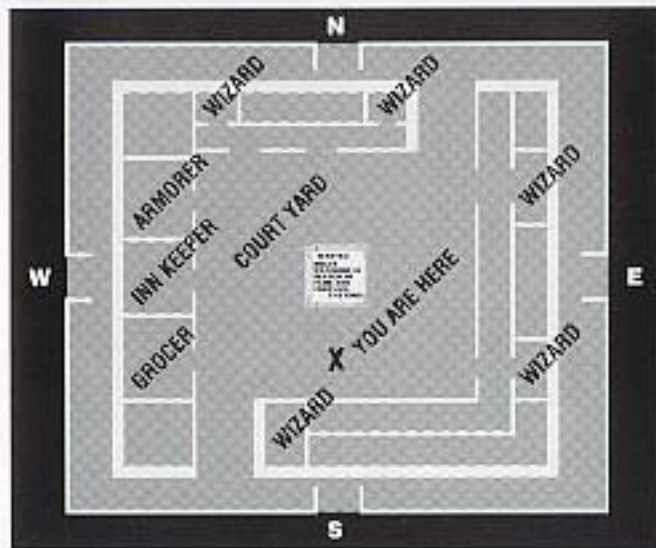
To quit the current game:

- Press the "B" button if you want to quit the game.
- Turn off your NES.

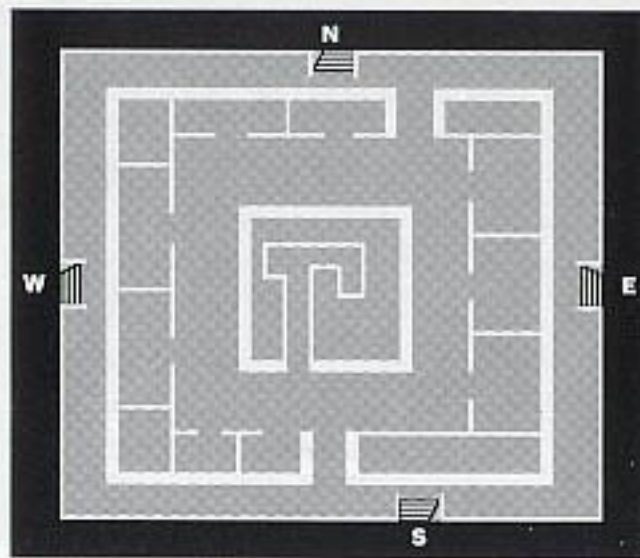
To start a saved game (after turning off your NES):

- Turn on your NES.
- See the section of your manual on how to **Continue Your Adventure**.

TOWN OF GRANVILLE MAP

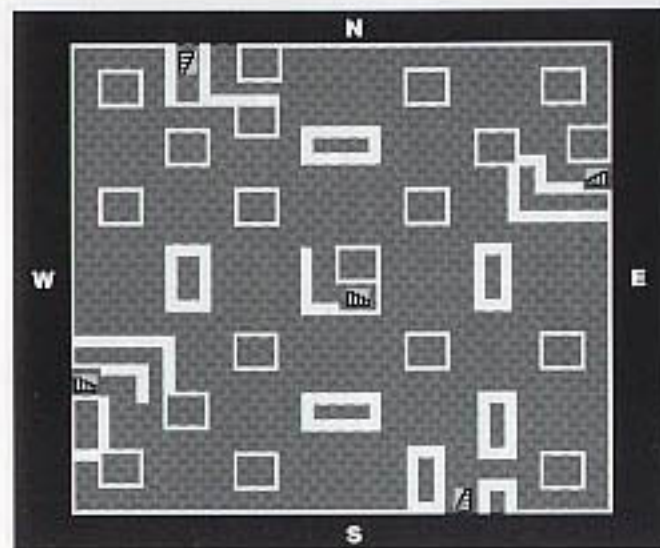


GRADES CASTLE MAP



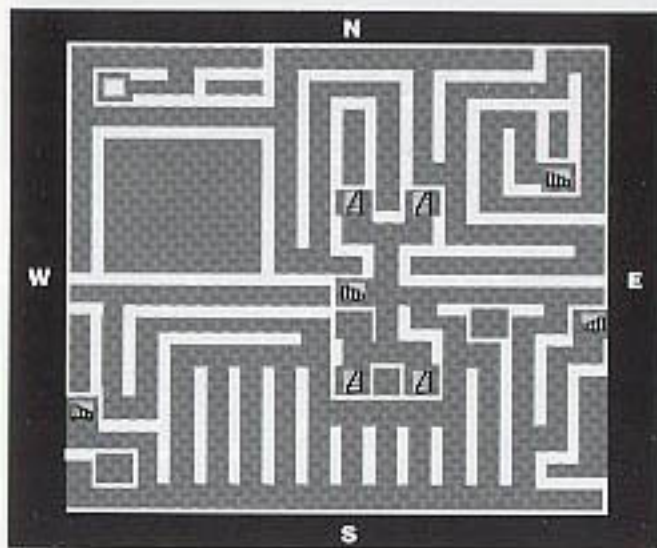
SANCTUARY AT SELLE MAP

Dungeon - Level I



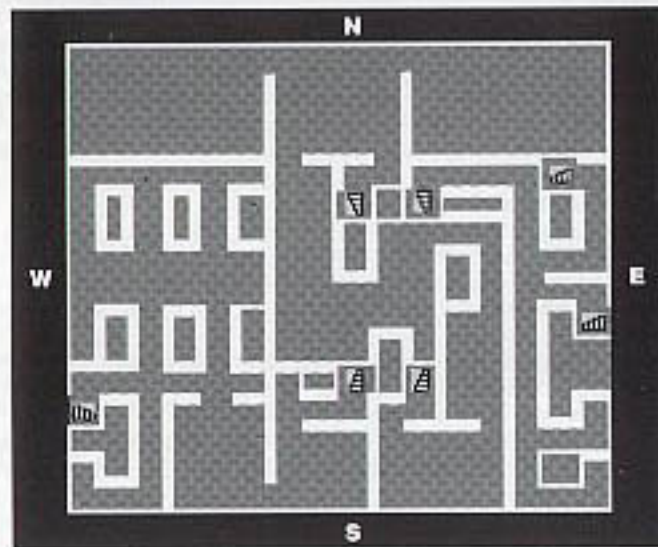
SANCTUARY AT SELLE MAP

Dungeon - Level II



SANCTUARY AT SELLE MAP

Dungeon - Level III



COMPLIANCE WITH FCC REGULATIONS

This equipment generates and uses radio frequency energy and if not installed and used properly, that is, in strict accordance with the manufacturer's instructions, may cause interference to radio and television reception. It has been type tested and found to comply with the limits for a Class B computing device in accordance with the specifications in Subpart J of Part 15 of FCC Rules, which are designed to provide reasonable protection against such interference in a residential installation. However, there is no guarantee that interference will not occur in a particular installation. If this equipment does cause interference to radio or television reception, which can be determined by turning the equipment off and on, the user is encouraged to try to correct the interference by one or more of the following measures:

- Reorient the receiving antenna
- Relocate the NES with respect to the receiver
- Move the NES away from the receiver
- Plug the NES into a different outlet so that the computer and receiver are on different circuits.

If necessary, the user should consult the dealer or an experienced radio or television technician for additional suggestions. The user may find the following booklet prepared by the Federal Communications Commission helpful: "How to Identify and Resolve Radio-TV Interference Problems." This booklet is available from the U.S. Government Printing Office, Washington, DC 20402, Stock No. 004-000-00345-4.

TAITO SOFTWARE, INC. LIMITED WARRANTY

Taito Software, Inc. warrants to the original purchaser of this Taito product that this cartridge is free from defects in materials and workmanship for a period of ninety (90) days from the date of purchase. This Taito product is sold "as is", without expressed or implied warranty of any kind, and Taito is not liable for any losses or damages of any kind resulting from the use of this product. Taito agrees for a period of ninety (90) days to either repair or replace, at its option, free of charge, this Taito product. Send product postage paid, along with dated proof of purchase, to the address shown below.

This warranty shall not be applicable and shall be void if the defect in the Taito software product has arisen through abuse, unreasonable use, mistreatment or neglect. **THIS WARRANTY IS IN LIEU OF ALL OTHER WARRANTIES AND NO OTHER REPRESENTATIONS OR CLAIMS OF ANY NATURE SHALL BE BINDING ON OR OBLIGATE TAITO. ANY IMPLIED WARRANTIES APPLICABLE TO THIS SOFTWARE PRODUCT, INCLUDING WARRANTIES OF MERCHANTABILITY AND FITNESS FOR A PARTICULAR PURPOSE, ARE LIMITED TO THE NINETY (90) DAY PERIOD DESCRIBED ABOVE. IN NO EVENT WILL TAITO BE LIABLE FOR ANY SPECIAL, INCIDENTAL, OR CONSEQUENTIAL DAMAGES RESULTING FROM POSSESSION, USE OR MALFUNCTION OF THIS TAITO SOFTWARE PRODUCT.**

Some states do not allow limitations as to how long an implied warranty lasts and/or exclusions or limitations of incidental or consequential damages, so the above limitations and/or exclusions of liability may not apply to you. This warranty gives you specific rights, and you may also have other rights which vary from state to state.